

Quick Start Guide

Vibe Air

vibe

Intended use

Hearing aids are intended to improve the hearing of hearing impaired persons. Diagnosis and prescription of a hearing aid must be performed by hearing health specialists, e.g. acousticians, audiologists or ENT doctors.

This Quick Start Guide will help you to be familiar with your new hearing device.

Once you see a QR code, use the camera on your Smartphone to capture the QR code to see a video of the topic in this Quick Start Guide.



WARNING

In case you have any doubt whether this device is appropriate for you, consult a licensed physician before using this device.

Contraindications

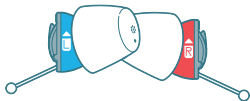


WARNING

Do not use the product if you have any of these conditions:

- ▶ a visible deformity of the ear
- ▶ a history of active discharge from the ear within the previous 90 days
- ▶ a history of sudden or rapidly progressive hearing loss within the previous 90 days
- ▶ acute or chronic dizziness
- ▶ sudden onset of hearing loss in one ear within the previous 90 days
- ▶ visible evidence of significant ear wax accumulation or a foreign body in the ear canal
- ▶ pain or discomfort in the ear

These parts you will find in the box:



Hearing aids



Click Sleeves

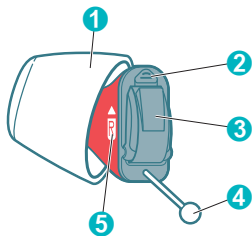


Case



Batteries

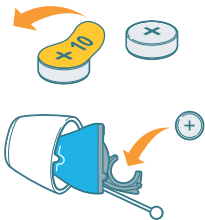
Get to know your hearing aids



- ① Ear piece (Click Sleeve)
 - ② Microphone
 - ③ Battery door (on/off switch)
 - ④ Removal cord
 - ⑤ Side indicator
-

Insert the battery

1. Take out a battery from the packaging and peel off the protection tab.
2. Insert the battery with the “+” symbol facing upwards.
3. Gently close the battery door.
If you feel resistance, the battery is not inserted correctly.



Power on/off

Turning on: Close the battery door.

You will hear a start-up jingle indicating that the hearing aid is turned on.

Turning off: Fully open the battery door.

Insert the hearing aids

The right hearing aid is marked with **R**.

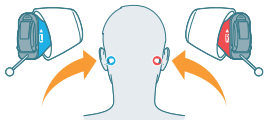
The left hearing aid is marked with **L**.

Before inserting the hearing aids:

Hold the hearing aids with the arrows pointing upwards and the removal cord at the bottom.

Carefully push the hearing aid into the ear canal.

If the hearing aids do not fit comfortably in your ear, please see the section “Change Click Sleeves”.



Remove the hearing aids

Remove the hearing aids by pulling the removal cord towards the back of your head.



WATCH QUICK VIDEO TUTORIAL
<https://help.vibe-hearing.com/air/wear>

Change Click Sleeves

The hearing aids come with pre-installed Click Sleeves.

If you do not feel comfortable using this size, you can change the Click Sleeves.

Please note that left and right ear sizes may differ.

Choose a **smaller size** if the hearing aid is pressing on your ear.

Choose a **larger size** if the hearing aid feels loose or makes whistling noise.

Remove Click Sleeve

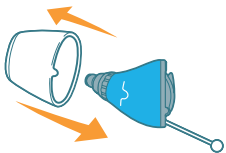
Grab and pull off the Click Sleeve.

Install new Click Sleeve

Make sure that the flap of the Click Sleeve matches the printed line on the hearing aid. You will hear a click when the Click Sleeve is fully installed.



WATCH QUICK VIDEO TUTORIAL
<https://help.vibe-hearing.com/air/sleeves>



Support

Please visit our website for more detailed information: www.vibe-hearing.com

Country-specific information USA and Canada

Certification information for hearing instruments with wireless functionality:

Vibe Air

- NFMI Module 2
- Contains FCC ID: SGI-MIM002
- Contains IC: 267AB-MIM002



Legal Manufacturer

WSAUD A/S
Nymøllevej 6
3540 Lyngø
Denmark

Document No.04483-99T01-7600 EN
Order/Item No.109 984 41
Master Rev01,10.2020
© 11.2020, WSAUD A/S. All rights reserved



www.vibe-hearing.com